

# Product Information



## 2875QMP100P30 RIGHT

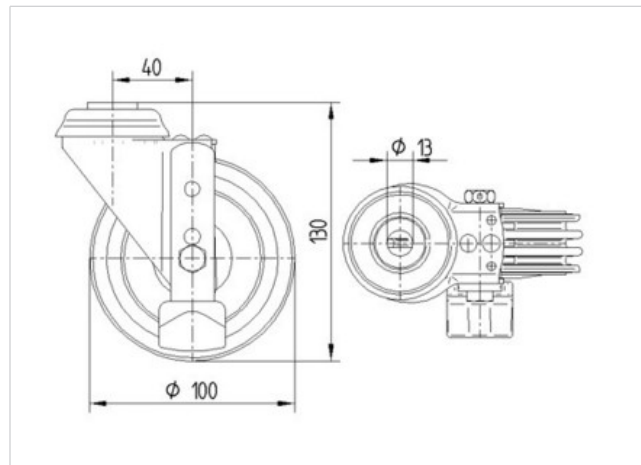
EAN 4031582324358

Walkway caster with integrated brake shoe for moving walkways, threadguards with integrated brake shoe, housing made of pressed steel, bright zinc plated, blue passivated, double ball bearing swivel head, wheel axle with nut, Wheel center made of Polyurethane, Tread: Polyurethane, 4 tracks, self-cleaning between tracks, with threadguards, precision ball bearing, distances between tracks: approx. 4,5 mm, track width: approx. 4,0 mm. Designed for the following pallet size: track width: approx: 2,75 mm, groove width: approx. 5,7 mm, groove depth: > 10 mm. **Hint:** Load capacity 80 kg per caster on level and securely attached floors, 40 kg per caster on walkways. Please note that according to EN1929 only casters with a minimum wheel diameter of 120 mm can be used on walkways.



### Technical Data

Wheel diameter	100 mm
Tread width	32 mm
Center hole	13 mm
Offset	40 mm
Swivel Interference	180 mm
Overall height	130 mm
Temperature	- 40 / + 60 °C
Standard	EN 12530
Weight	0.708 kg
Swivel Radius	90 mm
Hardness of tread	D 59 Shore



Roll performance	+	+	+	+	+
Movement noise	+	+	+	+	+
Attrition	+	+	+	+	+
Corrosion resistance	+	+	+	+	+

# Product Information



## 2875QMP100P30 RIGHT

EAN 4031582324358

